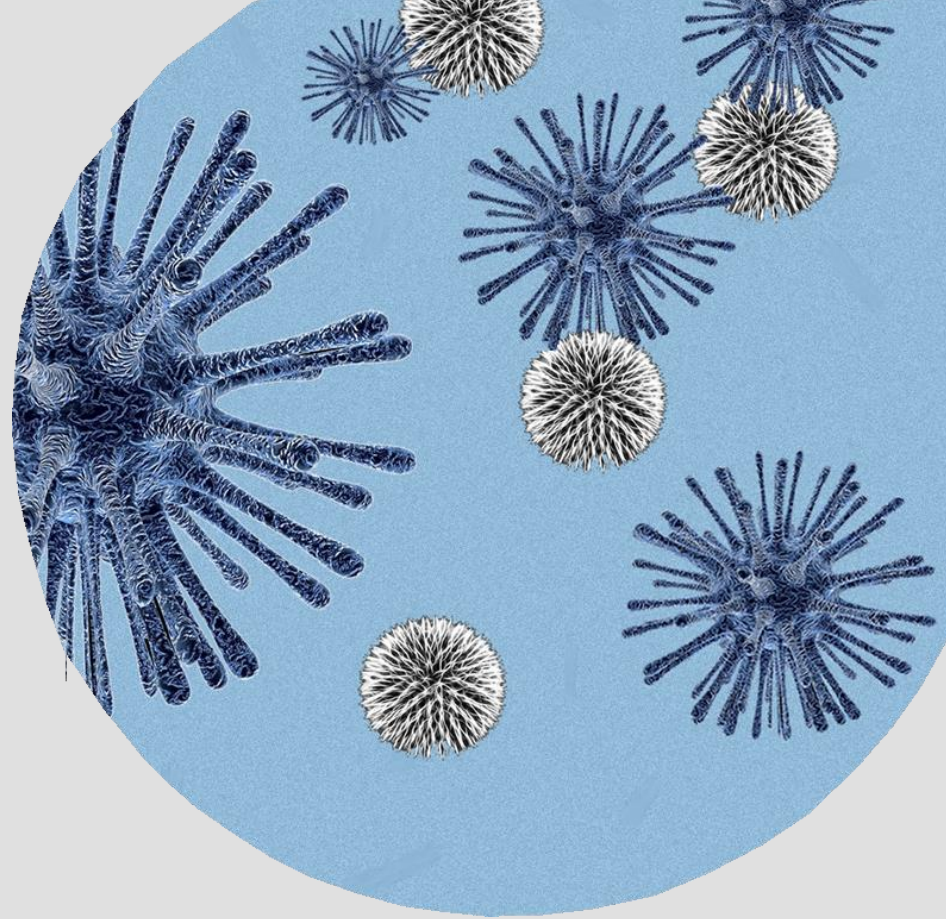


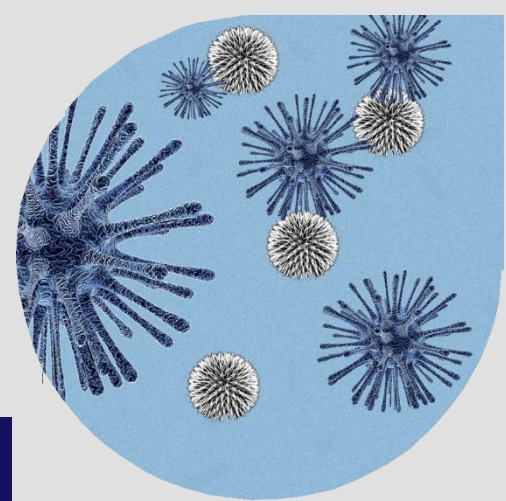
Sheffield Teaching Hospitals

Dave Partridge
Barcelona, 3/5/17

Picture
of peaks



Sheffield



12/05/2017

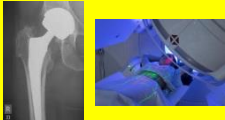
Sheffield Teaching Hospitals



>2000 Beds



Supraregional services



1.5M people



Varied Architecture



Bed pressures



Strong IPC team

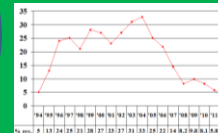


Local threats



MDRO

Good track record

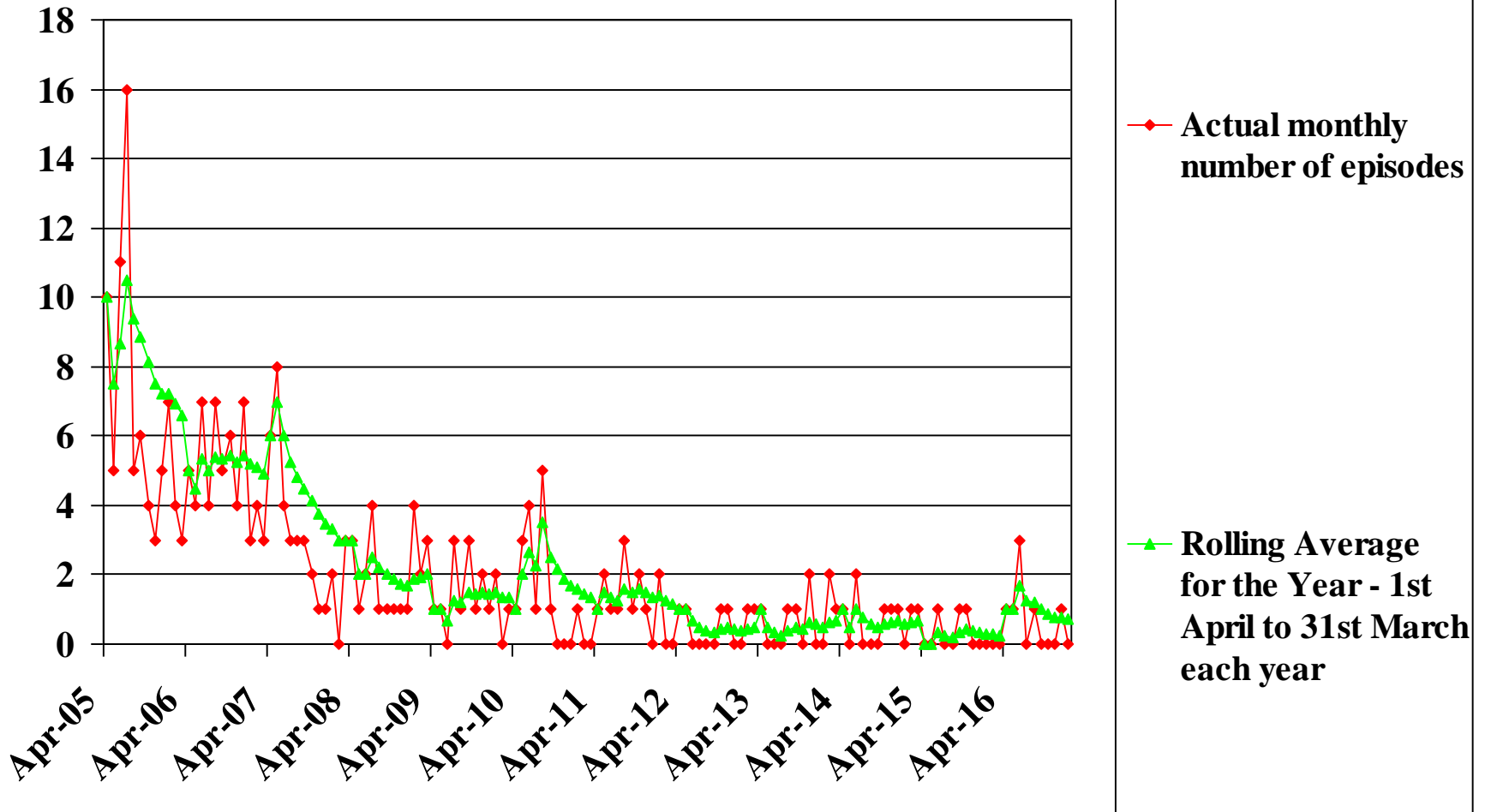


Varied Architecture!

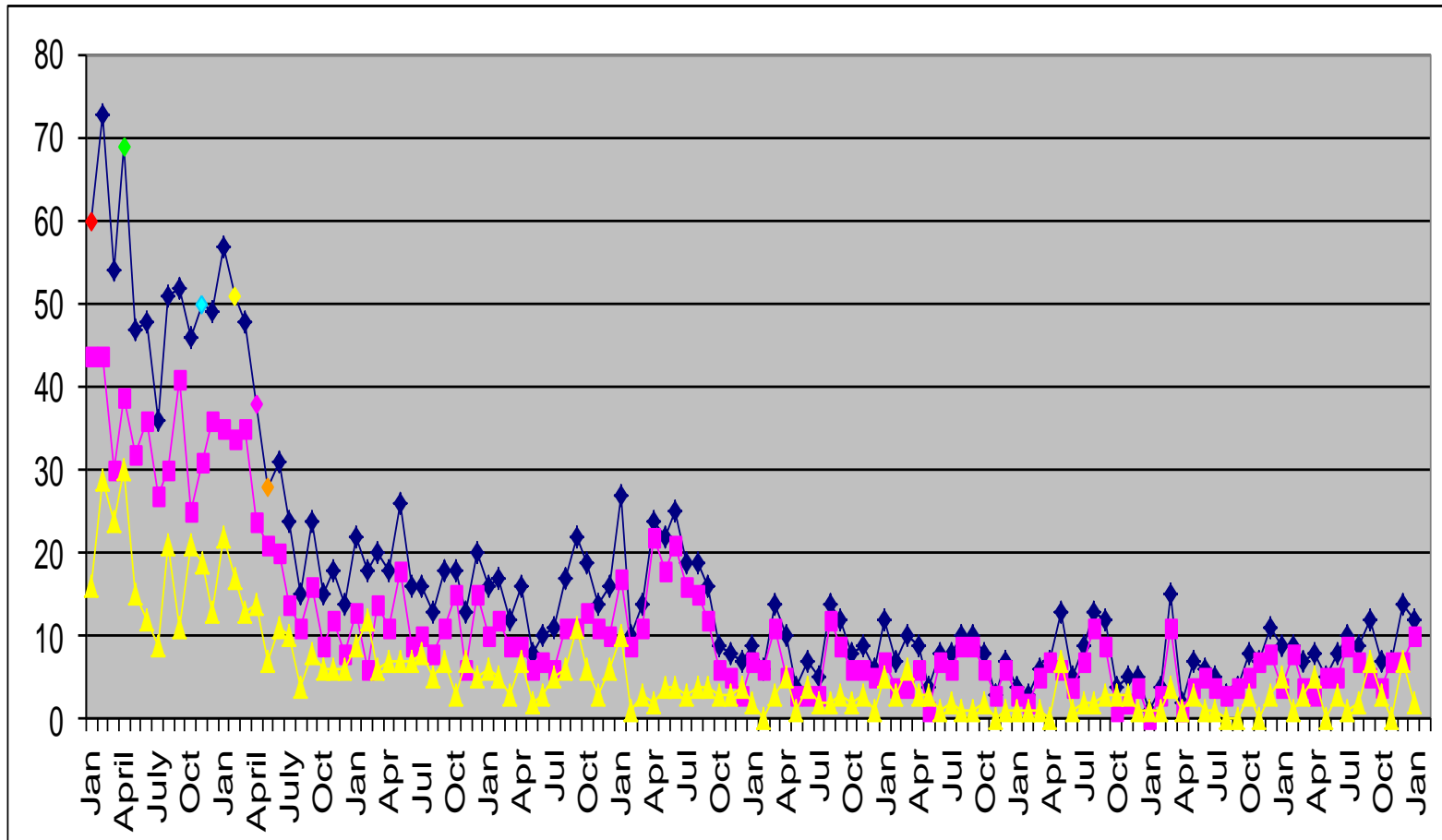


Sheffield MRSA bacteraemia data

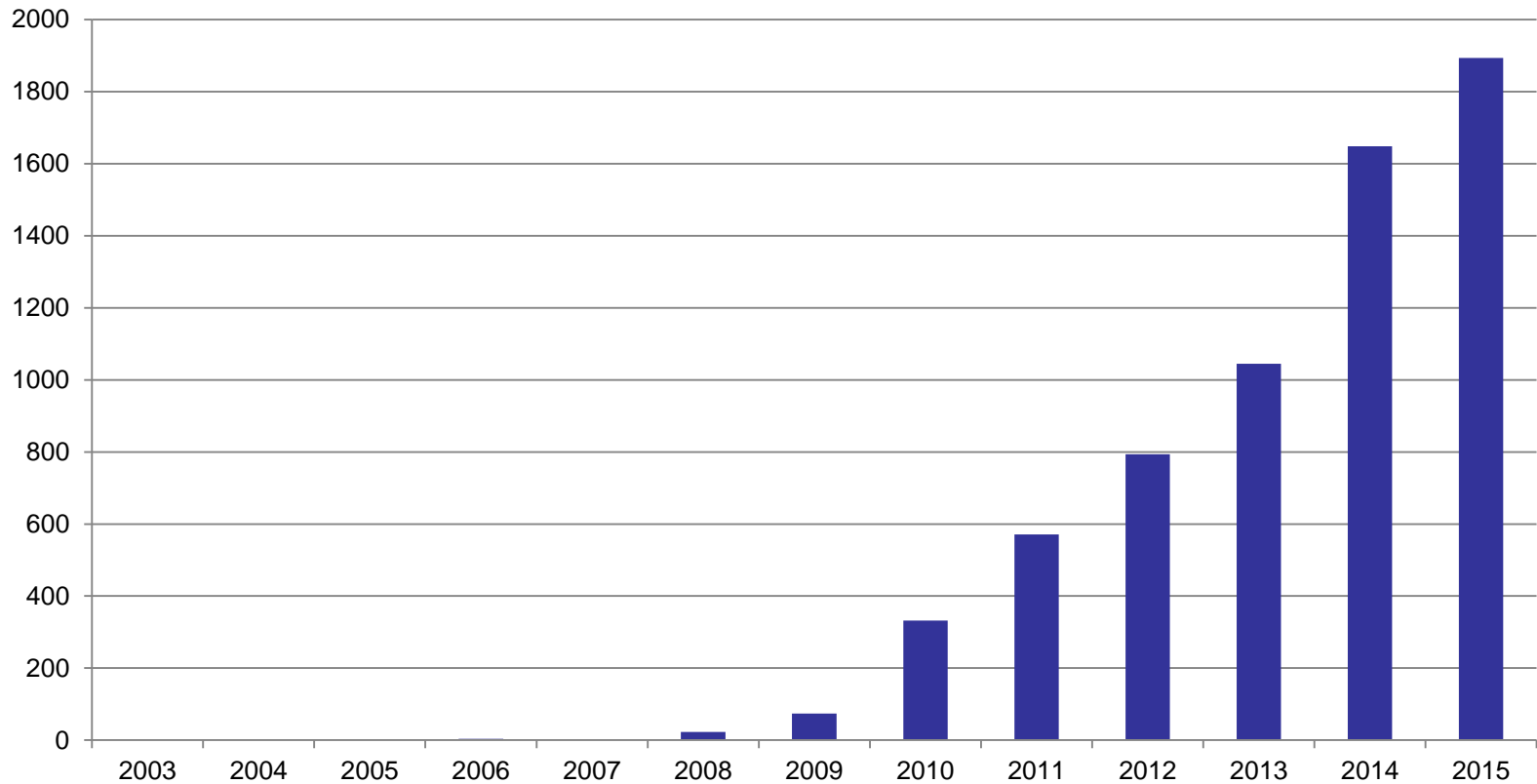
2005-17 – All episodes

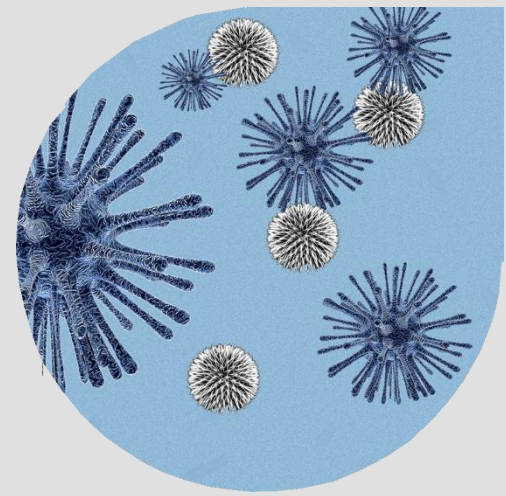


Clostridium difficile 2007-

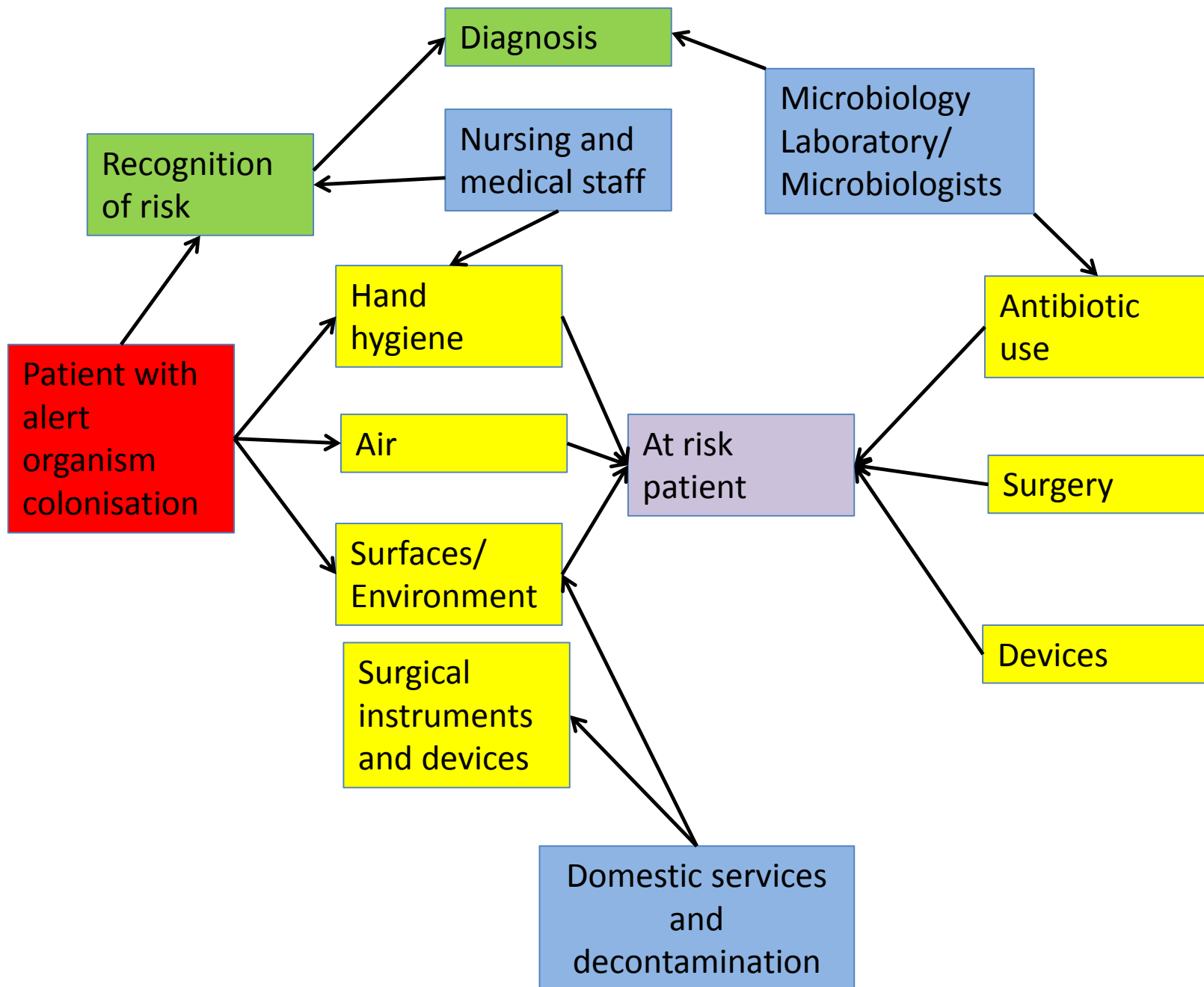


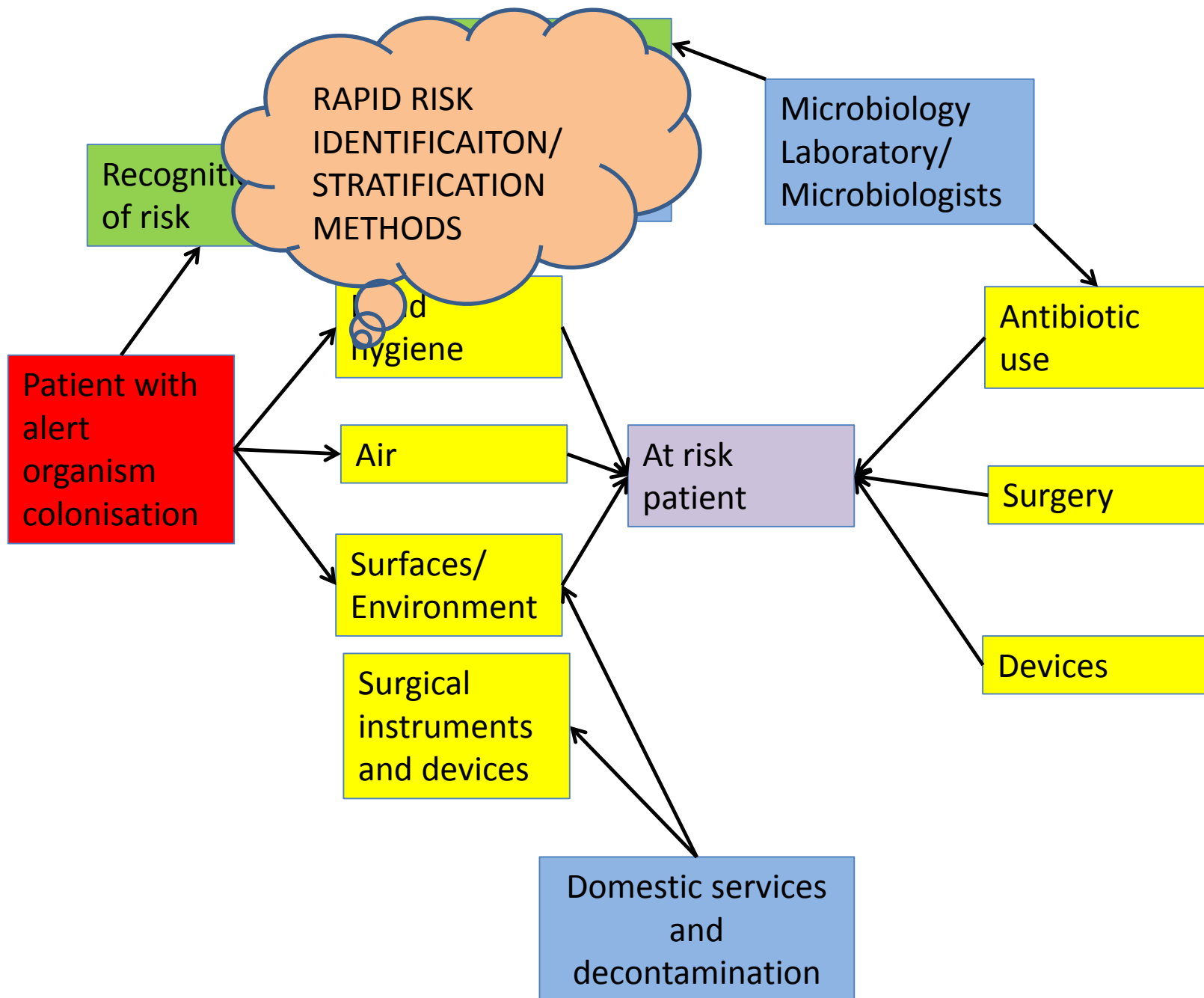
Confirmed UK CPE cases

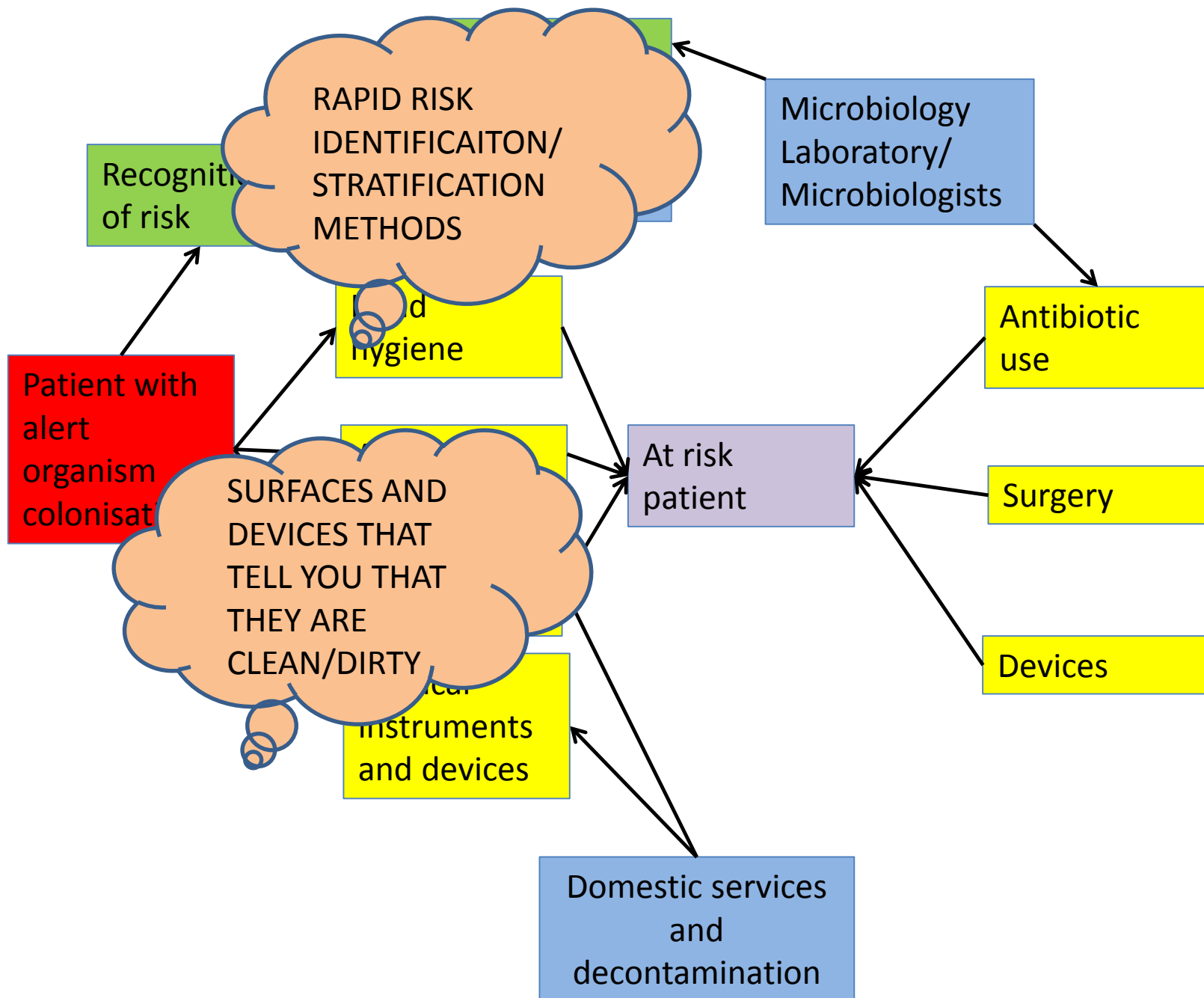


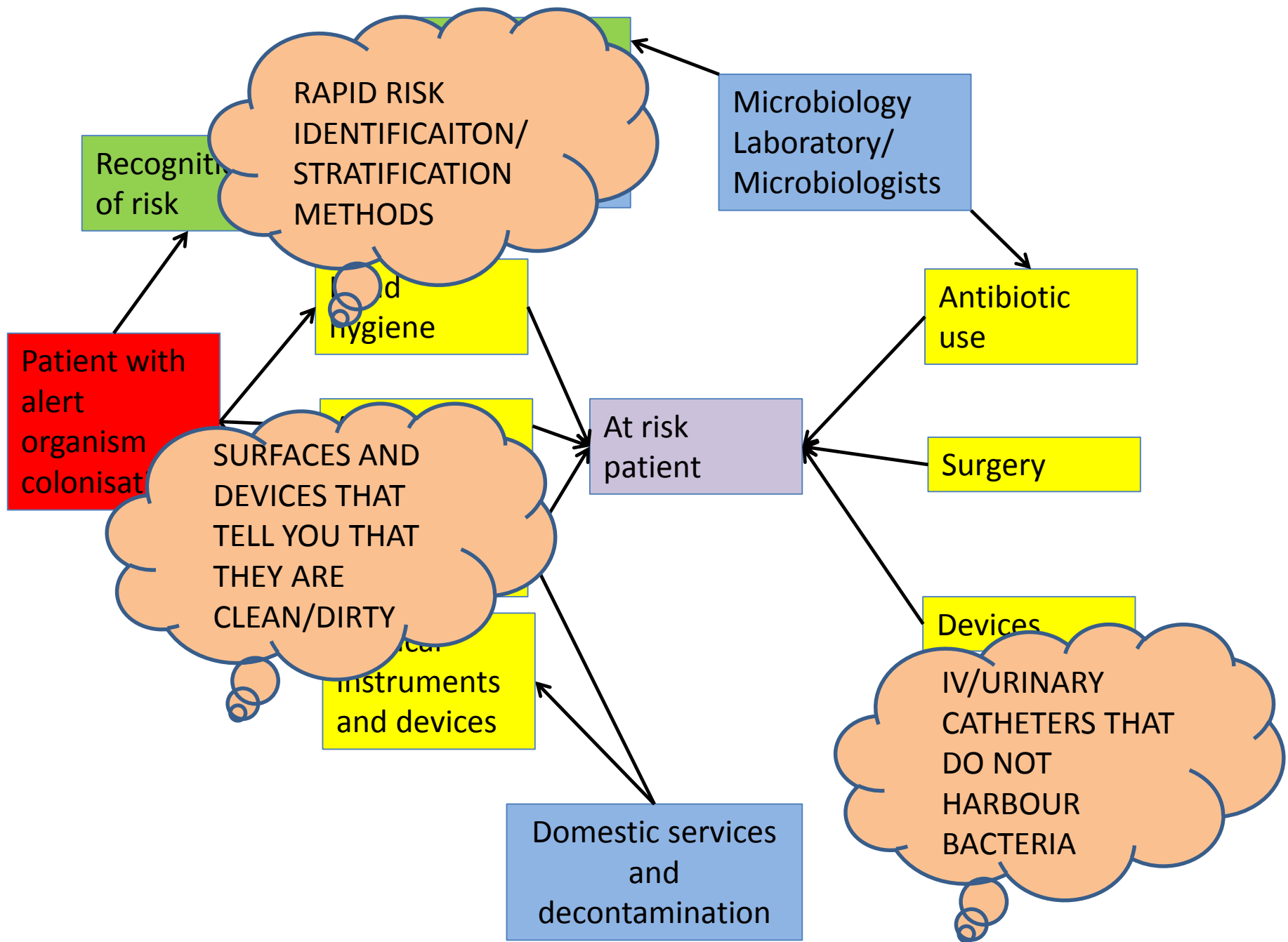


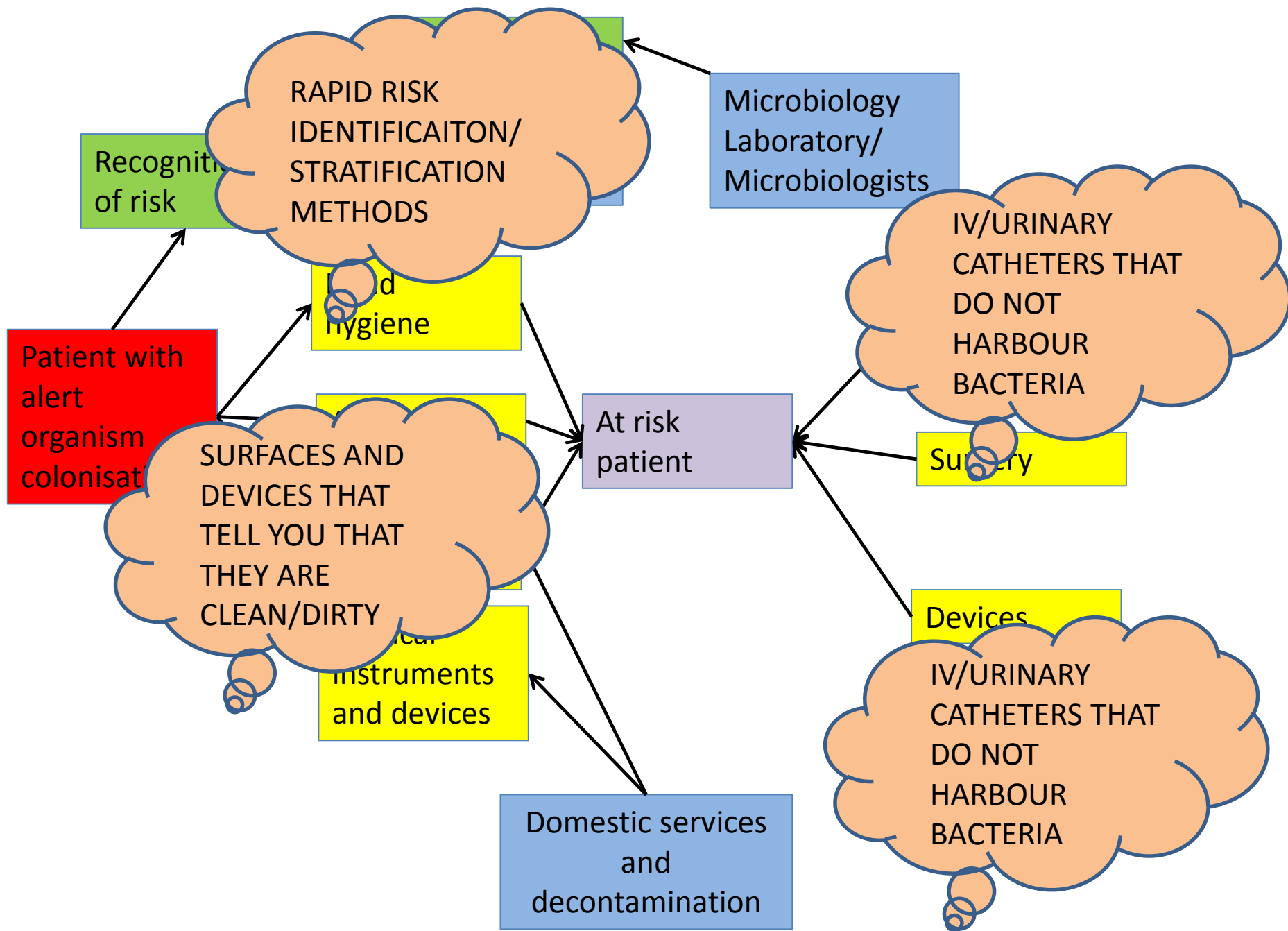
What are our needs and expectations?

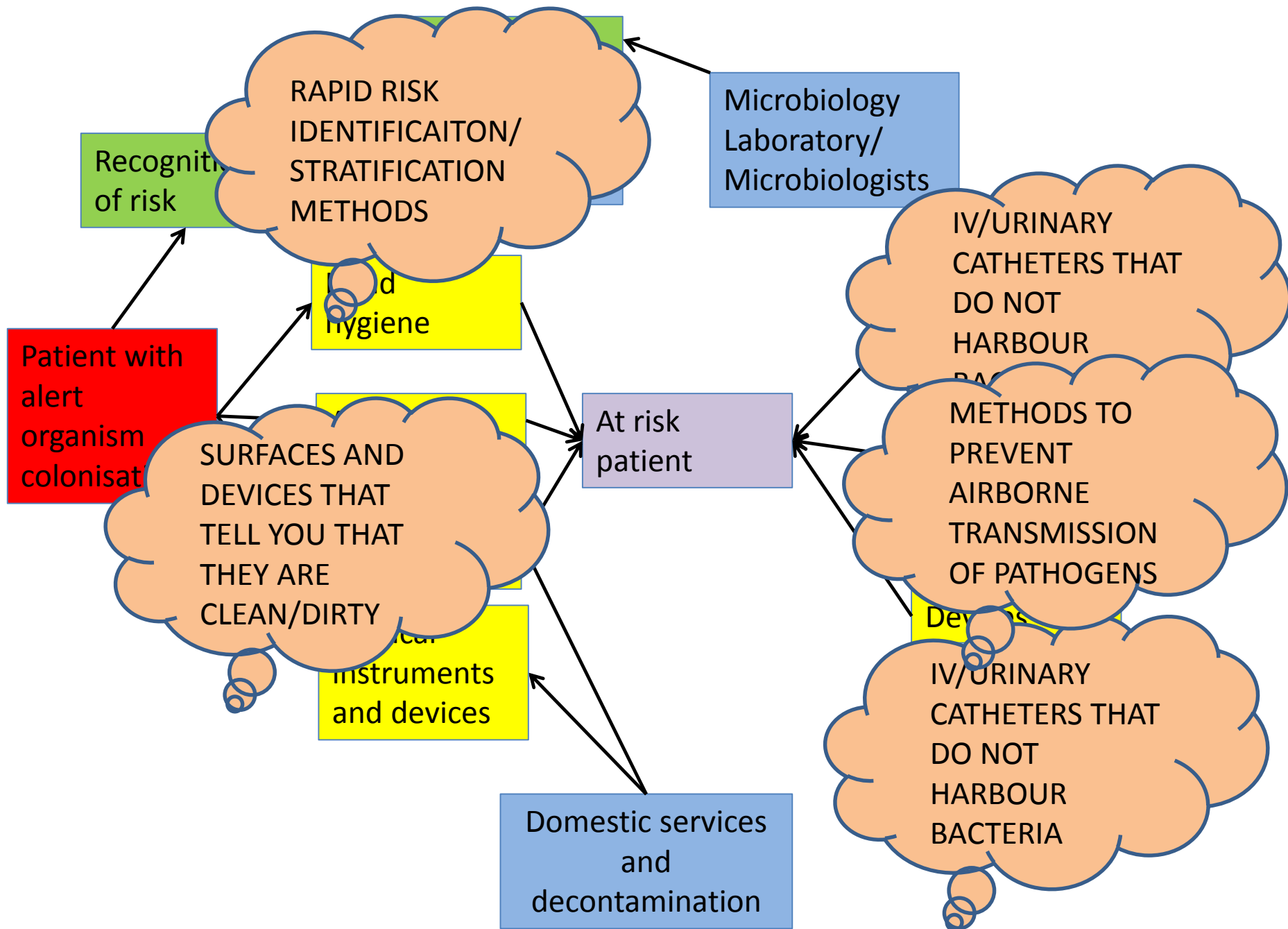


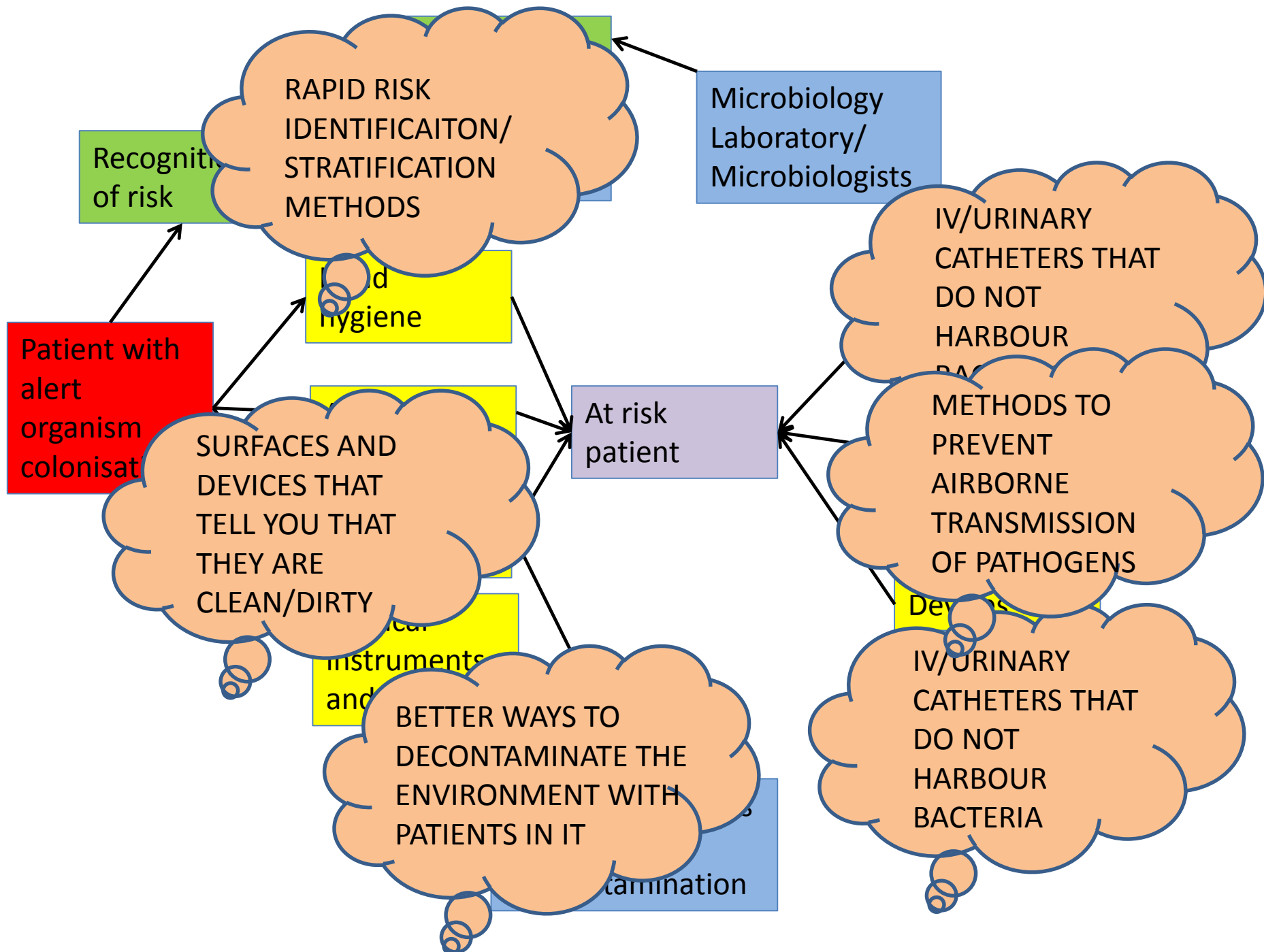


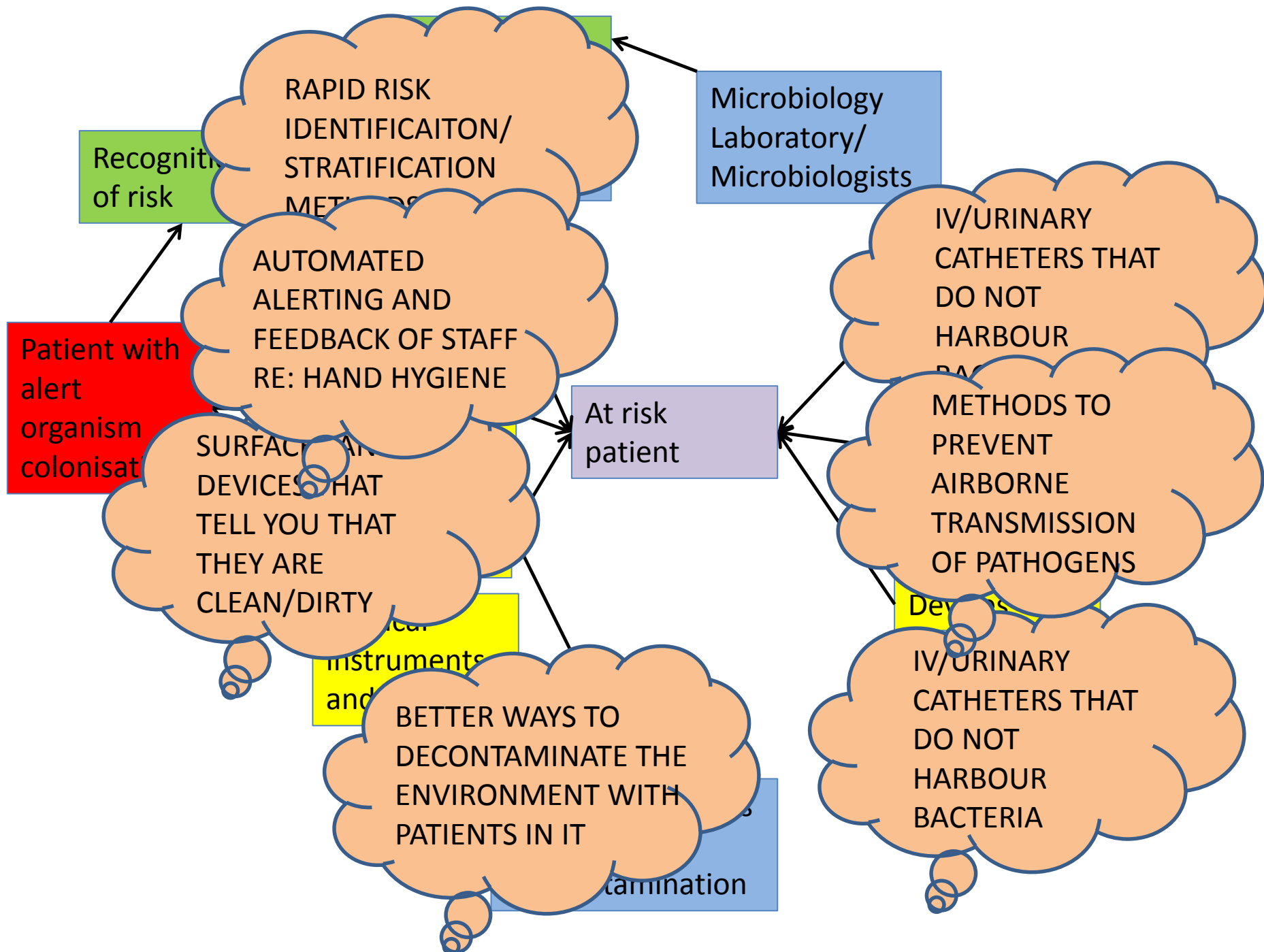


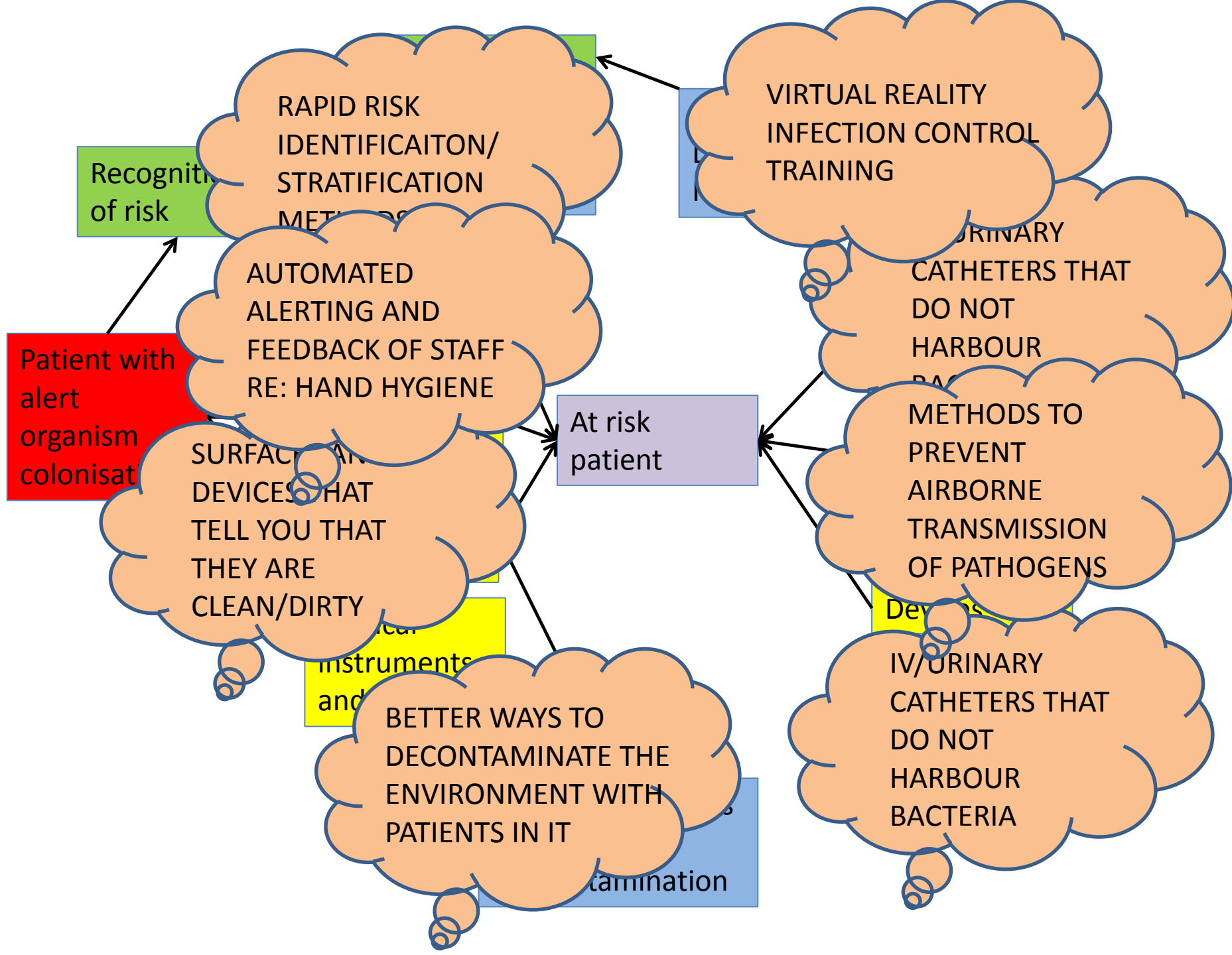


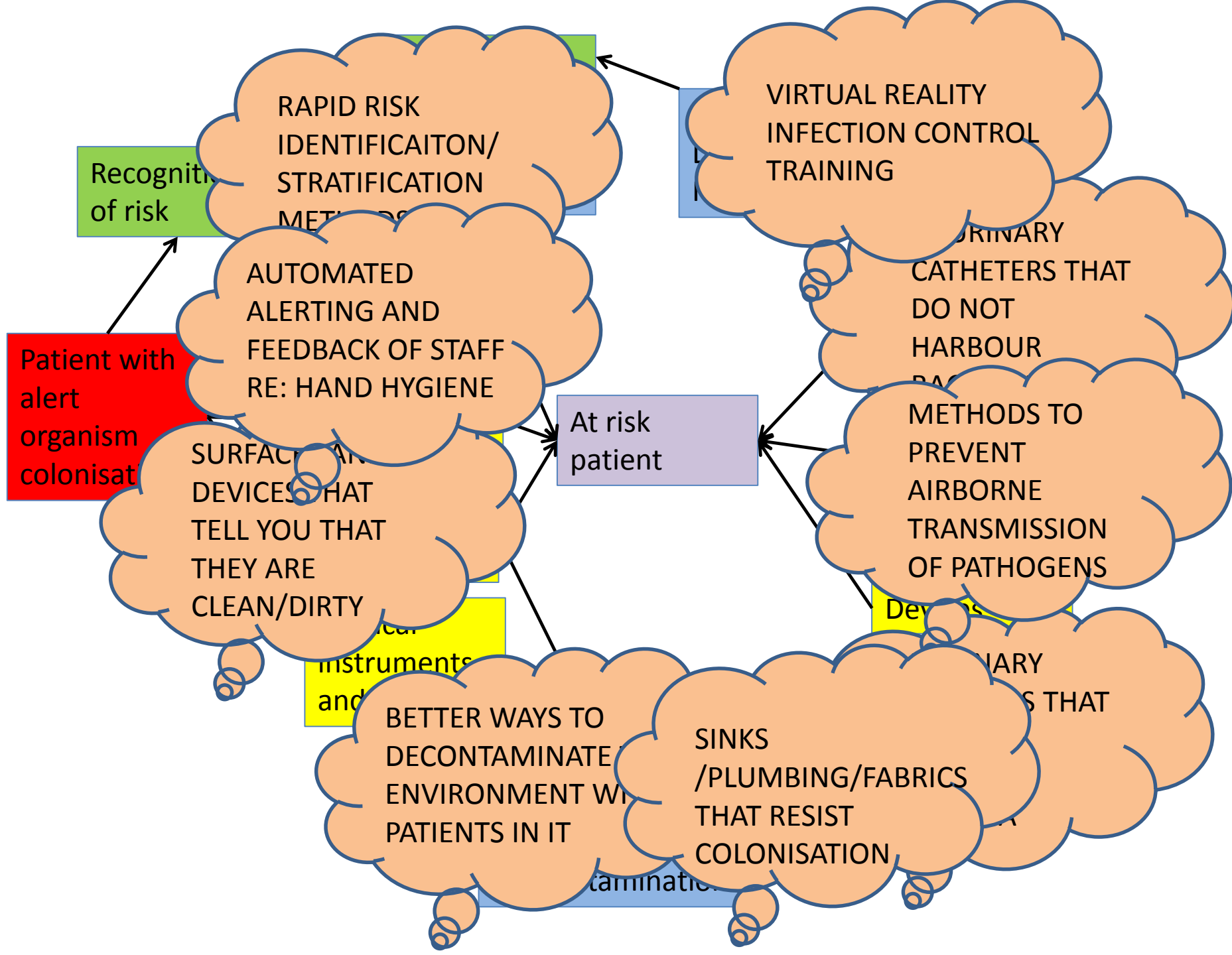


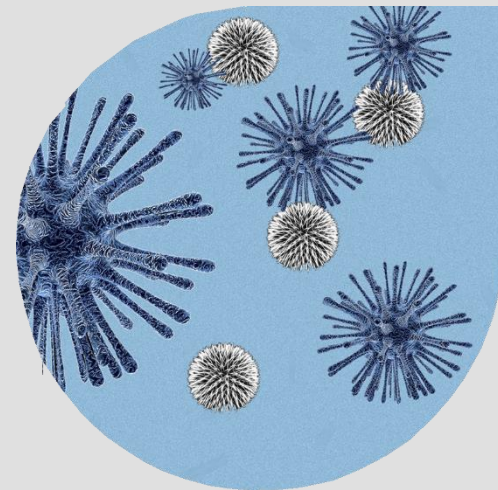












Thank you

- David Partridge
- David.partridge@sth.nhs.uk
- <http://www.antisuperbugs.eu>

